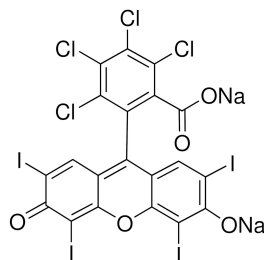


Certificate of Analysis

Product Name : Rose bengal Dye content 95 %, ≥96% (HPLC)
Product Number : 330000-1G
Batch Number : 0000453885
Source Batch : SHBQ2281
CAS Number : 632-69-9
MDL Number : MFCD00005043
Molecular Formula : C₂₀H₂Cl₄I₄Na₂O₅
Formula Weight : 1017.64 g/mol
Quality Release Date : 23 FEB 2023



Test	Specification	Result
Appearance (Color)	Red to Brown	Brown-Red
Appearance (Form)	Conforms	Conforms
Powder and/or Chunks		
Infrared Spectrum	Conforms to Structure	Conforms
Wavelength	546 - 550 nm	549 nm
Wave Length		
c = 0.004g/L H ₂ O + 1ml 1% Na ₂ CO ₃		
Extinction Coefficient	≥ 98000	100625
Wavelength	513 - 517 nm	515 nm
Extinction Coefficient	≥ 32000.00	32710.50
Wavelength	350 - 354 nm	354 nm
Extinction Coefficient	≥ 3000	4878
Wavelength	311 - 315 nm	314 nm
Extinction Coefficient	≥ 12000	13365
Wavelength	262 - 266 nm	264 nm
Extinction Coefficient	≥ 32000	33612
Purity (HPLC)	≥ 95.0 %	99.3 %
Approximately		

Larry Coers, Director
 Quality Control
 Milwaukee, WI
 US

Sigma-Aldrich warrants, that at the time of the quality release or subsequent retest date this product conformed to the information contained in this publication. The current Specification sheet may be available at Sigma-Aldrich.com. For further inquiries, please contact Technical Service. Purchase must determine the suitability of the product for its particular use. See reverse side of website or packing slip for additional terms and conditions of sale.

Version Number: 01 Doc 1222571

Page 1 of 1

The branding on the header and/or footer of this document may temporarily not visually match the product purchased as we transition our branding. However, all of the information in the document regarding the product remains unchanged and matches the product ordered. For further information please contact mlsbranding@sial.com

